

Slush & Frozen Beverage Freezers

Make the Electro Freeze Slush Freezer Your Profit Center 3 Models to choose From

Takes Only a Small Amount of Floor or Counter Space

Can Generate an Unbelievable Volume in Slush Drink Sales

Returns Profits of 80% or More Per Slush Drink

About These Models

These machines dispense a consistently smooth, non-carbonated frozen slush drinks in 5 or more flavors. At 115 volts, they are air cooled, self contained.

Takes Only Minutes for Initial Freezedown

With a fast freeze process, tiny uniform ice crystals are produced, resulting in a super-cold, taste-tingling slush drink.

High Production Capacity Models

The 876 and 876C are high production capacity models, while the smaller 877 meets average volume needs.

Minimal Maintenance

Easy to own and simple to operate, no daily cleaning is required.

Sturdy Construction

Components made of heavy-duty stainless steel include the panels, drip tray, freezing cylinder, beater, mix hopper and flavor rack. Bottles and pumps also are made from quality, long-lasting materials.

Reliable

All models use a torque control system to manage product consistency and maintain temperature.



Model 876
Shown with optional sign

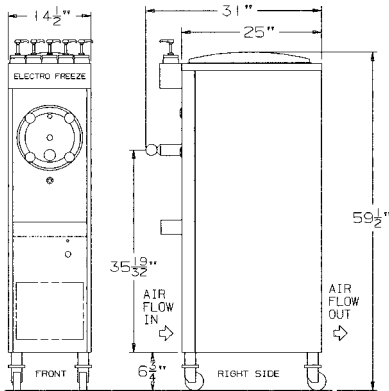


Model 876C

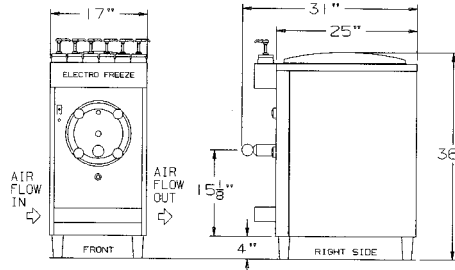


Model 877
Shown with optional sign

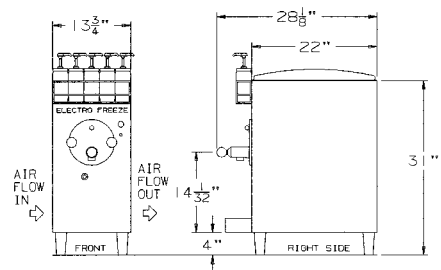
ELECTRO FREEZE®



Model 876



Model 876C



Model 877

Optional Accessory Items

- Convenient side mount adjustable cup dispensers
- Accurate 15 gallon neutral base mixing container — has lid, spigot and one gallon markings on side.
- Stainless steel stir rod for mixing base.
- Self-serve flavor rack.
- Submersible pump & mix level control is available for pumping from mix container to hopper.
- Colorful illuminated "Flashing" sign with mounting bracket available for each model.
- Mix level indicator automatically tells operator when mix is needed.

SPECIFICATIONS

All specifications subject to change without notice. Check name plate for exact electrical data.

MODEL NO.	MOTOR H.P.		DIMENSIONS			MIX HOPPER	FREEZING CYLINDER	SHIPPING WT.	TOTAL AMPS
	Beater	Compressor	D.	W.	H.				
876	1/4 H.P.	5,500 BTUH 3/4 H.P.	25" 64 cm	14 1/2" 37 cm	59 1/2" 151 cm	20 qts. 18.9 Liters	14 qts. 13.2 Liters	280 LB. 127 KG	15.5
876C	1/4 H.P.	5,500 BTUH 3/4 H.P.	25" 64 cm	17" 43 cm	**36" 92 cm	20 qts. 18.9 Liters	14 qts. 13.2 Liters	255 LB. 116 KG	15.5
877	1/4 H.P.	4,600 BTUH 5/8 H.P.	22" 56 cm	13 3/4" 35 cm	**31" 79 cm	20 qts. 18.9 Liters	7 qts. 6.6 Liters	210 LB. 96 KG.	15.5

Air cooled self contained.

Standard wiring-115 volts A.C., 60 Cy, 1 Phase

Electrical characteristics other than above available on request from Sales Office.

**Includes 4" adjustable legs

Authorized Distributor

Minimum Circuit

876	20A.
876C	20A.
877	20A.

division of H.C. DUKE & SON, INC.

2116 - 8th Avenue • East Moline, Illinois 61244

Phone (309) 755-4553 • (800)755-4545

Fax (309) 755-9858

E-mail: sales@electrofreeze.com • www.electrofreeze.com

Certified and/or listed by:



*Listed by Underwriters Laboratories under Canadian National Standard C22.2 No. 120-M91